

Advantages

- **8 devices at once:** Write! Before programs up to 8 devices at once, reducing drastically programming times and costs.
- **Stand-Alone Mode:** Write! Before programmer works also without PC connection. The operator effects by pressing START button.
- **Specialized on MCU supports:** Unlike some of our competitors, Write! Before is specialised in MCU programming.
- **High-Speed Programming:** Write! Before performances allow to reach out theoretical programming speed for any given device.
- **LAN interface:** Write! Before allows to send data production through Internet from a local R&D laboratory directly to any other Write! Before instrument in the world.
- **Data crypton:** Intellectual Property Protection by crypting the image file.
- **Variable Data Programming:** Write! Before allows to personalize/customize each single device with variable data, such as Serial Numbers, MAC address, barcode data, etc..
- **ATE interface:** Easy implementation into automated programmers and ATE machines by using simple ASCII remote commands.
- **Technical Support:** Algocraft offers support for technical inquiries forthwith.
- **World Wide Service:** Our selected distribution network covers more than 20 countries.

Package Contents

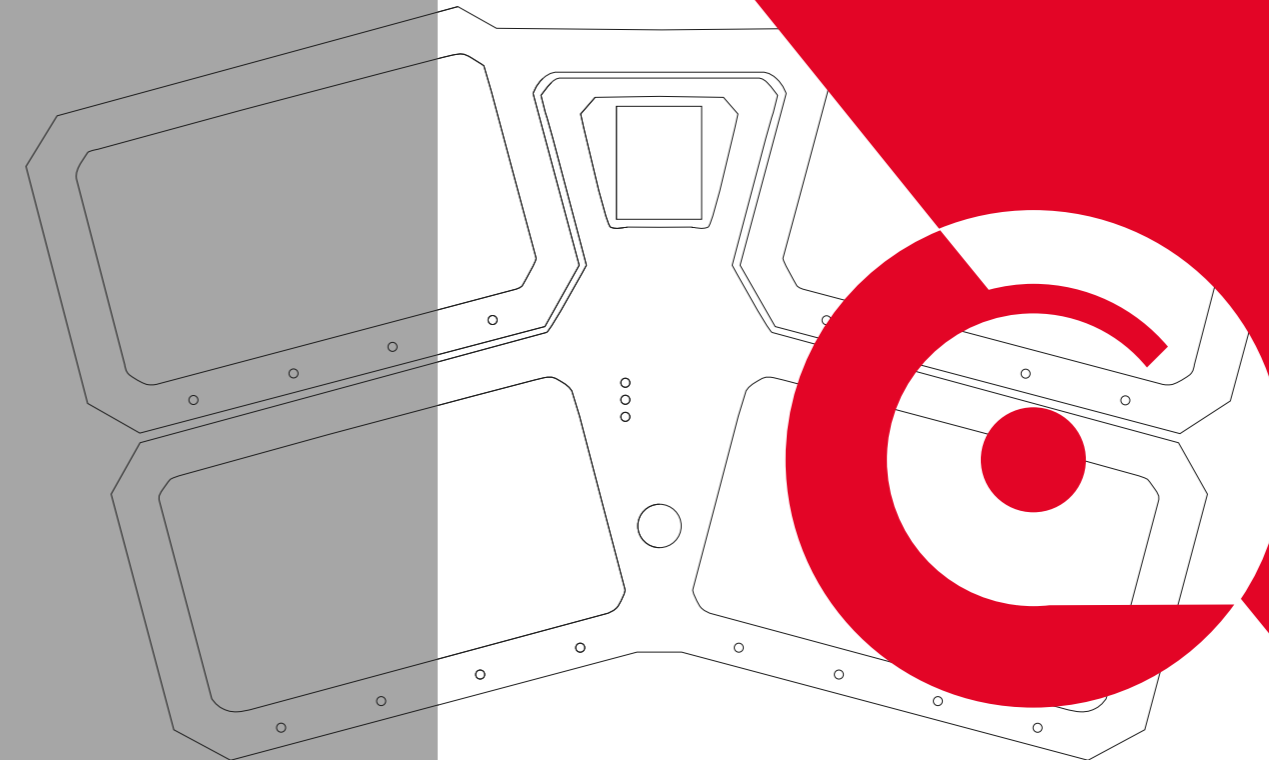
- Write! Before Unit
- 15V Power Supply
- Serial and Ethernet LAN cable
- Software CD
- Diagnostic Adapter for selftest
- Socket Adapter (optional)

Silicon Support

- Adesto
- Atmel
- Cypress
- Giga Device
- Infineon
- Microchip
- Micron
- Nordic Semiconductor
- NXP (Freescale)
- Renesas
- Sigma Designs
- Silicon Labs
- Spansion
- SST
- STMicroelectronics
- Texas Instruments
- Winbond

DCA 16007

write!BEFORE
SOCKET PROGRAMMER 816A



Algocraft S.r.l.
Via G. Agnelli, 1
Villotta di Chions (PN) - ITALY

Ph. +39 0434-421130
info@algocraft.com
www.algocraft.com



SOLUTIONS FOR THE PROGRAMMING INDUSTRY

Key Features

- Based on Algocraft WriteNow! technology
- Excellent performance
- Supports FLASH microcontrollers & serial memories
- Implementation into available 3rd party automated programmers and ATE machines
- Up to Eight devices programmable at once
- Device-Specific Programming Socket

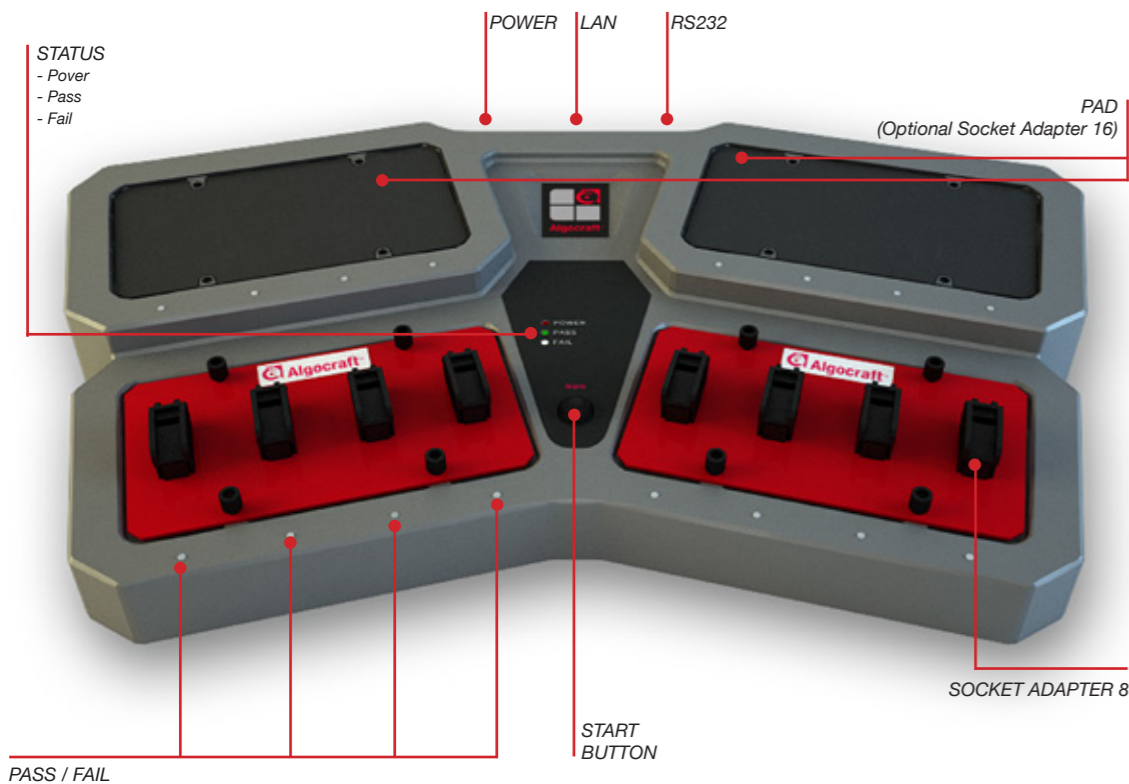
Applications

- Off-board programming
- On-board programming for standalone stations

Socket Adapter

Socket Adapters are printed circuit boards which connect the programming sites to the base unit. The Socket Adapter (SA) includes the appropriate socket (DIP, SDIP, SOIC, QFP, BGA) and the appropriate electrical connections for programming a specific device.

Connectivity



Hardware Features

- Universal and upgradable base unit
- High-speed I/O
- High-speed, parallel programming
- Memorizes data on a built-in memory card
- Programmable I/O voltage (1.6-5.5V)
- Standalone operations or host controlled
- Supports multiple package (DIP, SOIC, TQFP, BGA, etc)
- 8-Sites Programming Socket
- START button, PASS/FAILS LEDs

Programming Speed

Device Code	Memory Size	Operations Performed	Prog.Time
MB96F613	96KB	Erase + Blank Check + Program + Verify	12 s
M25P10	128KB	Erase + Blank Check + Program + Verify	3 s
PIC18F1936	16KB	Erase + Blank Check + Program + Verify	9 s
ATMEGA1284P	128KB	Erase + Program + Verify	10 s
R7F701010	512KB	Erase + Blank Check + Program + Verify	11 s
STM32F446RE	512KB	Erase + Blank Check + Program + Verify	15 s
MC9S12GN32	32KB	Erase + Blank Check + Program + Verify	5 s
STM32F051K8	64KB	Erase + Blank Check + Program + Verify	6 s
SAMD21E16	64KB	Erase + Blank Check + Program + Verify	11 s
XC2234L-20F66	160KB	Erase + Blank Check + Program + Verify	7 s
MPC5633M	1MB	Erase + Blank Check + Program + Verify	15 s

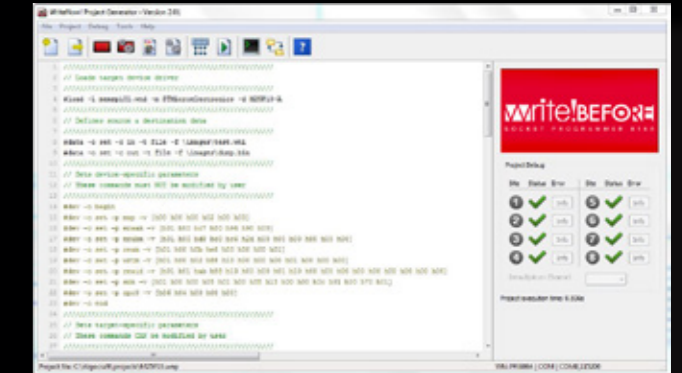
Specifications

Device Supported	Serial memories, Microcontrollers, etc
Packages	DIP, SOIC, TQFP, PLCC, BGA, etc
Host Interface	LAN, RS232
Power Supply	AC Adapter: Input AC 100V- 240V; Output: 15V/1.5A
Dimensions	560 x 330 x H60 mm
Weight	3.6Kg

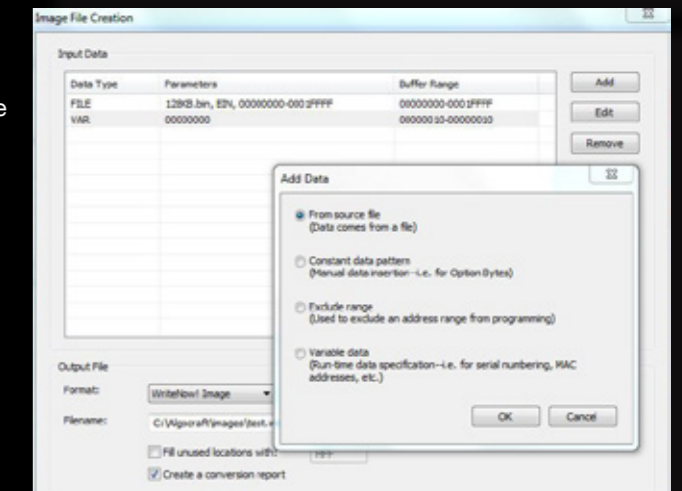
Write!BEFORE
SOCKET PROGRAMMER 816A

Software Features

- **Project Wizard:** creates and debugs a programming Project in fews guided steps very easily.



- **File Merge:** combines different programming data sources (boot, application, variable data, etc.) in a single output file.



- **File Manager:** allows you to see Write! Before file structure and to transfer files with the PC in an easily way.

