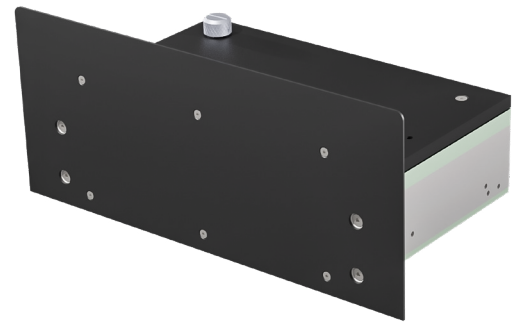
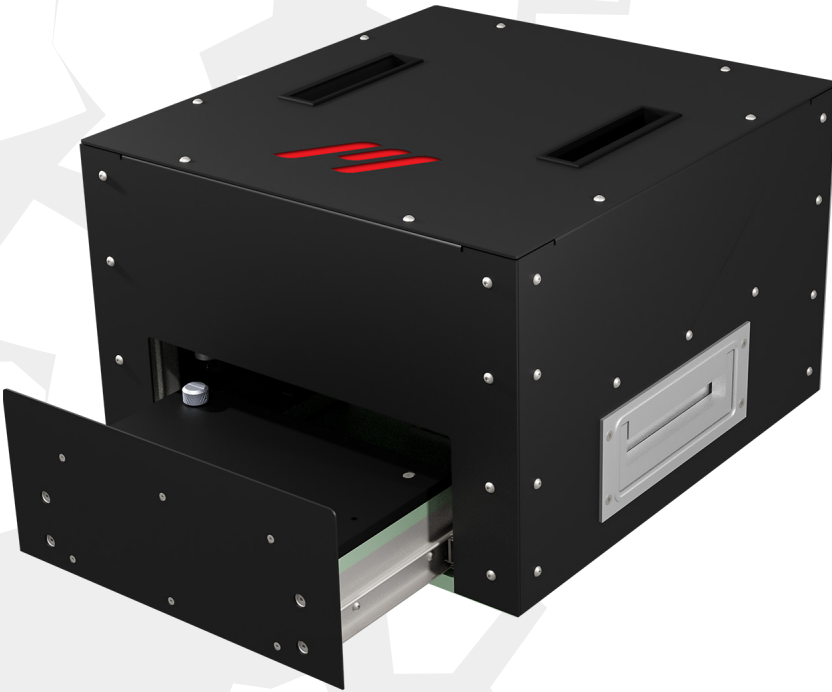


DFS-E190x90-EXCH-PYL Drawer Fixture

The NEW, Innovative **Drawer Type Fixture** (DFS) from MTTest Solutions is ready to meet challenging In-Circuit (ICT), Functional (FCT) and End of Line (EOL) Testing Tasks.

- Up to 170 N Maximum Load for Secure PCB Contacting
- Automatic Drawer Closing / Opening
- Single (Bottom) Side Testing
- Quick Fixture Kit Exchange
- Customizable Pylon Block Interface
- Single + Dual Stage Testing



* Image is for demo purpose, real product can be different!

Technical Features

Dimensions (L x D x H):	395 x 429 x 266 mm [15.551 x 16.889 x 10.472 in]
Usable Area (EXCH-PYL):	190 x 90 mm [7.480 - 3.543 in]
Top Side Clearance:	Max. 24 mm [0.945 in]
Protection:	ESD Safe
Compressed Air:	Standard 6 Bar in accordance with DIN ISO 8573 3.4.5
Internal Interface:	2 pcs ITA-ST-85-KT06 (or other Types) Pylon Block Interface on the Exchangeable Drawer Kit
Fixture Interface:	Customizable Plate for any Type at back side of the Fixture
Color:	Standard Black or Custom Painted (RAL Standard)
Weight:	approx. 23 kg [50.70 lbs]

Exchangeable Drawer Kit

