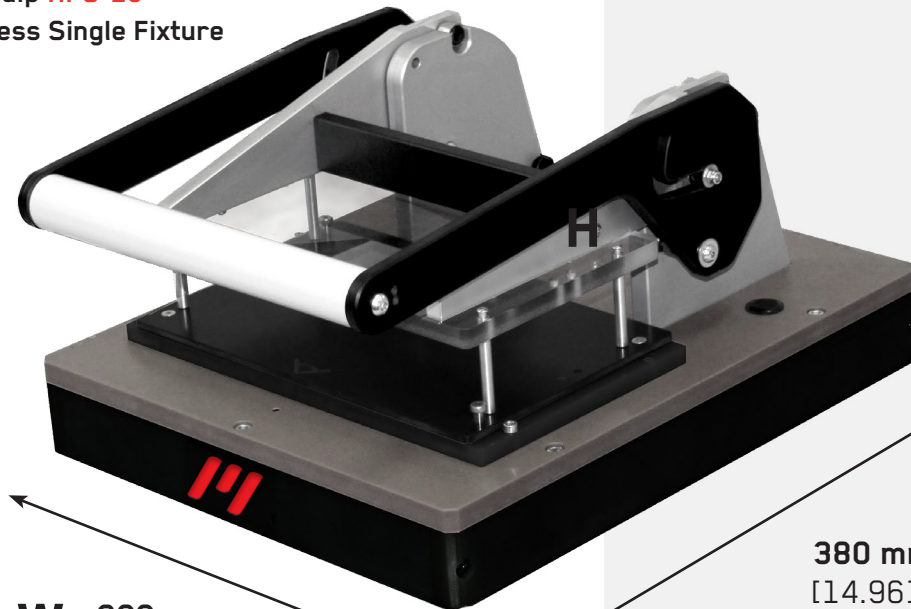


# Hand Press Fixture Kit

## HPS-25

Equip **HPS-25**  
Hand Press Single Fixture



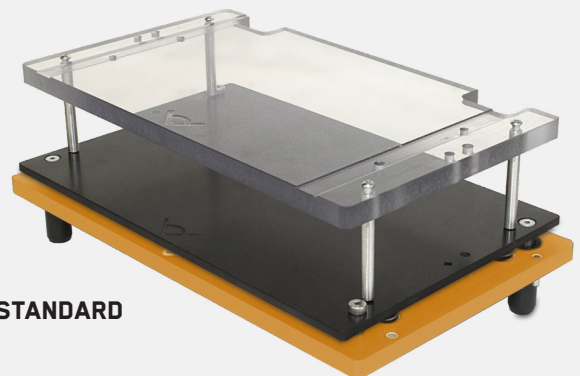
**W** 300 mm  
[11.811]

**H**  
200 mm  
[7.874]  
(closed)

**360 mm**  
[14.173]  
(opened)

**D**  
380 mm  
[14.961]

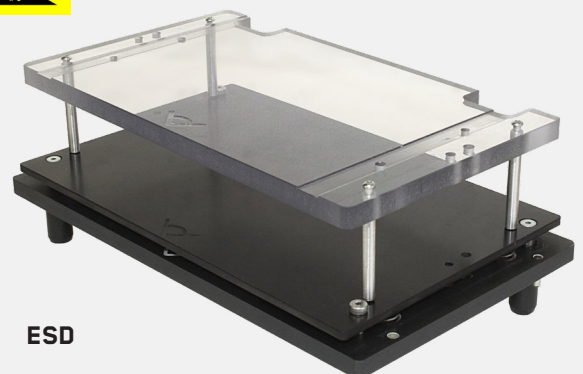
Equip **EXCH-HPS-25**  
Exchangeable Kit (Standard)



STANDARD



Equip **EXCH-HPS-25-ESD**  
Exchangeable Kit (Optional)



ESD

### Technical Features:

- Housing Type: Straight with Single Well
- Maximal Usable Area:  
200 mm x 125 mm  
[7.874 in x 4.921 in]
- Contact Force Generation: Manual
- Ergonomic Handle for easy closing
- Easy Maintenance & ESD Safe (optional)
- Exchangeable Kit (EXCH - HPS - 25)
- Paralell Contact Stroke: 6.4 mm [0.253 in]
- Contact Force: maximum 300 N
- Max. Component Height: 30 mm [1.181 in]  
\*(PCB is 1.60 mm [0.063 in] thick)
- Opening Angle (Drive Unit): 80°
- Weight: approx. 4 kg

MTTest Solutions R&D department has designed a new **Hand Press Fixture** for low pin-count applications.

Ideal for flash programming, rework purposes. As it has an exchangeable kit feature, it is perfect solution for small, middle batch and /or high-mix productions.

