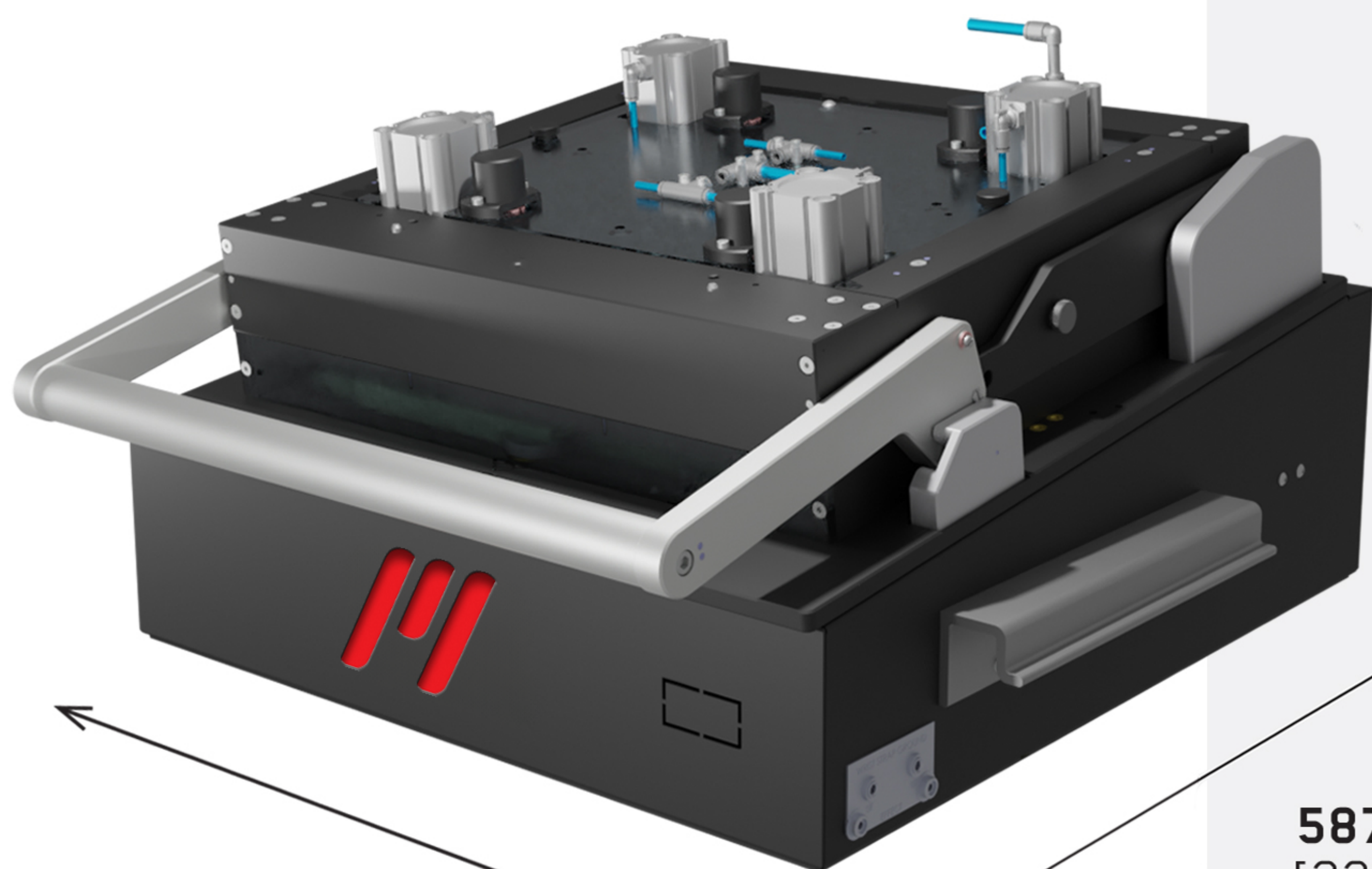


OPTIONAL CONSTRUCTION ND-MFS-D3-PYL with **ND-EXCH-D3-DS-PYL**

Dual Stage Exchangeable Kit with Pylon Interface

The new single well MTest Solutions Mechanical Test Fixture ND-MFS-D3-PYL, Customized with ND-EXCH-D3-DS-PYL Exchangeable Kit, complies to demanding Dual Stage Testing challenges.



460 mm
[18.110]

W with Alum-A-Grip Handles

549 mm
[21.614]

326 mm
[12.834] **H**

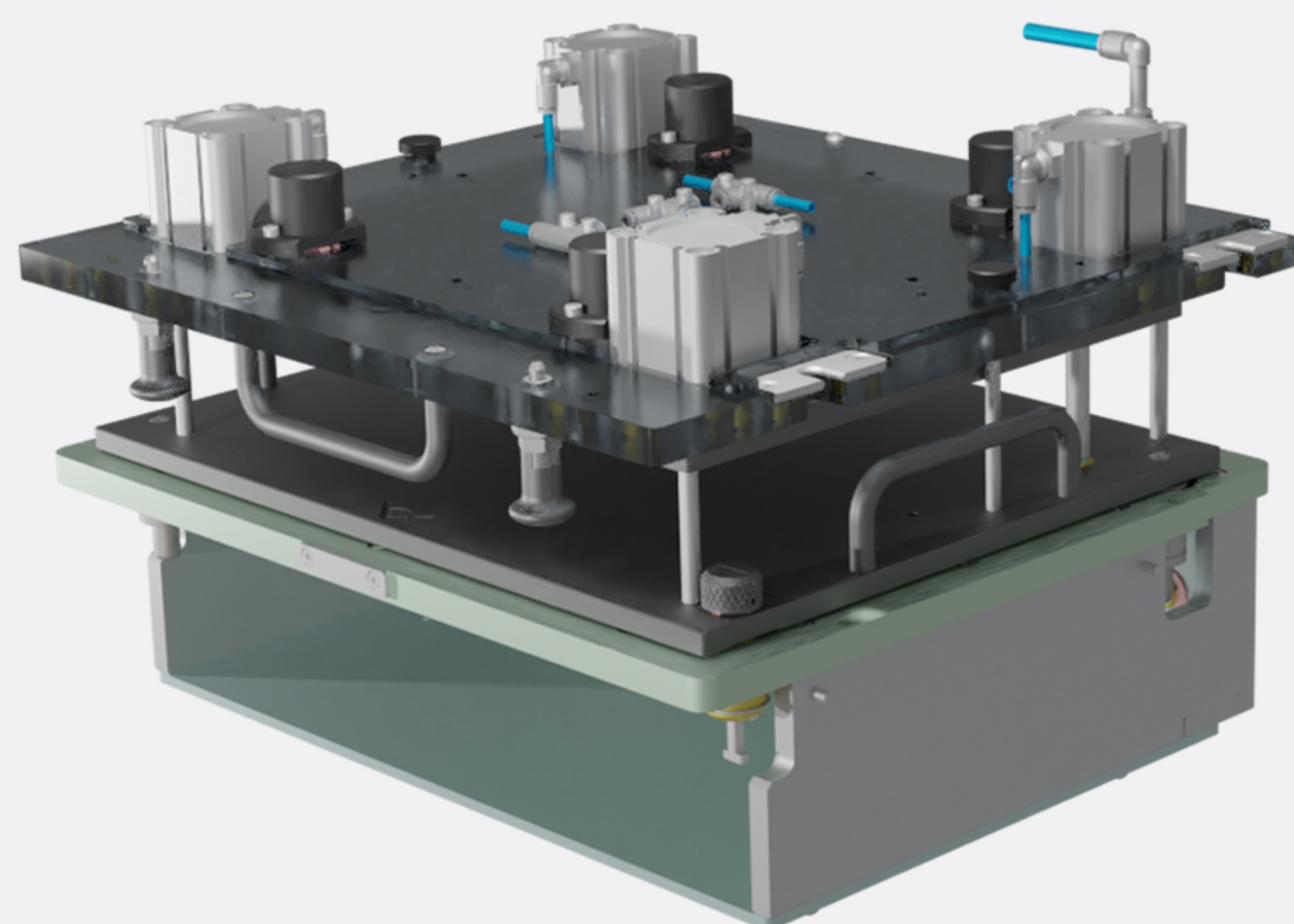
587 mm
[23.110] **D**



Technical Features:

- External Dimension (width x deep x height) with Handles:
549 mm x 587 mm x 326 mm
[21.614 in x 23.110 in x 12.834 in]
- Usable Area: 224mm x 178mm [8.819 in x 7.007 in]
- Maximum Force 800 N
- Big inner space for Optional Hardware
- Ergonomic Handle for easy closing
- Exchangeable Kit is prepared with Pylon Interface Blocks
- ESD Safe & Easy Maintenance
- Quick Exchange System - Modular Fixture
- Alum-A-Grip Handles for transport and lift

For Compatibility, the Mechanical Test Fixture must be customized with **ND-EXCH-D3-DS-PYL-500** Dual Stage Build Up Set



Equip **ND-EXCH-D3-DS-PYL**
Exchangeable Kit with Pylon
Interface

