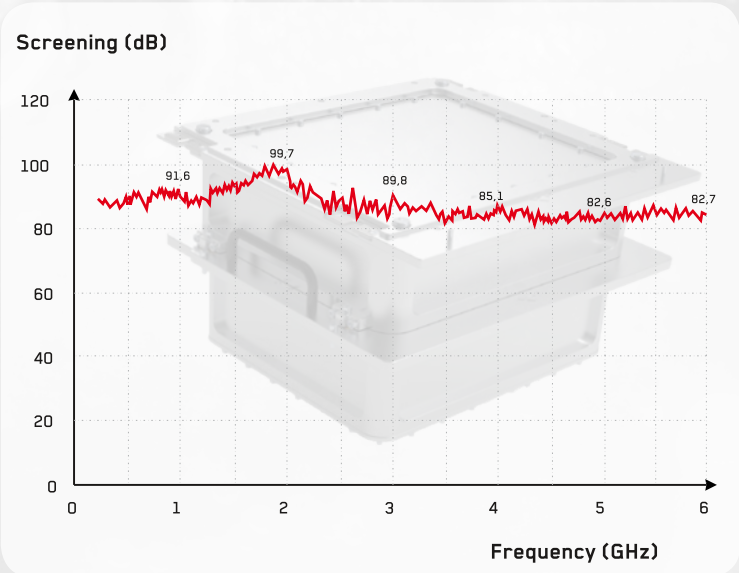
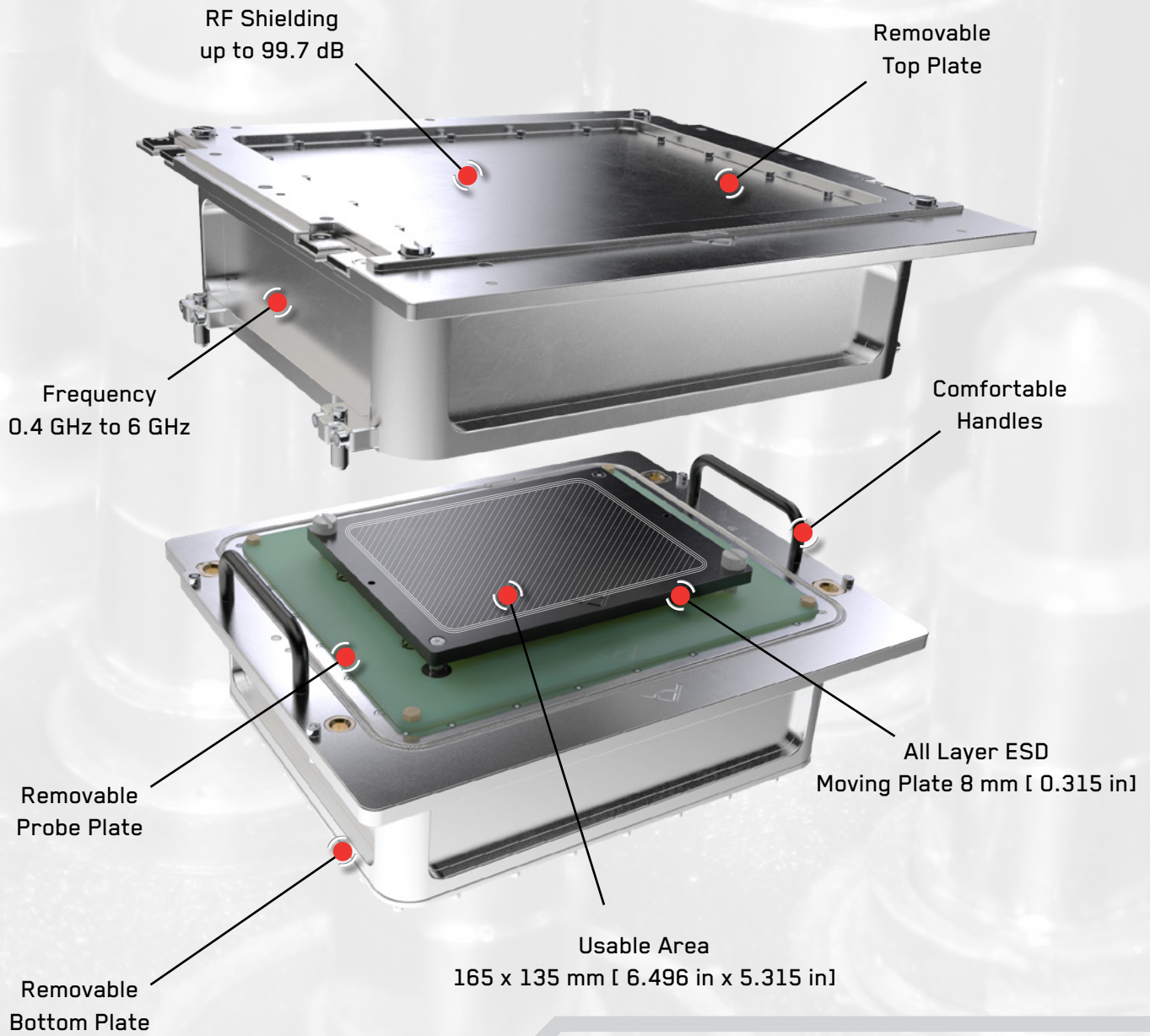


ND-RF-EXCH-D3



For available configurations please contact
MTTest Solutions Group Customer Service at
info@mttestsolutions.com

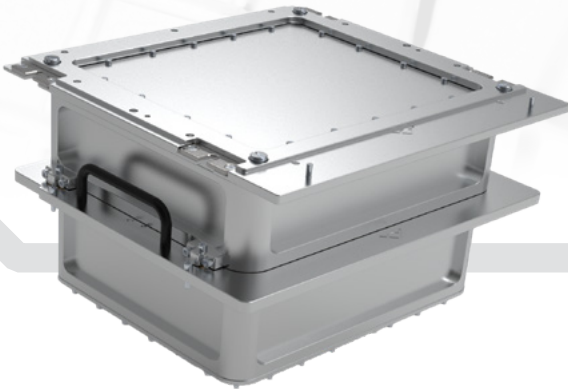
RF EXCHANGEABLE UNIT

with user friendly Top Cover & ESD Protection

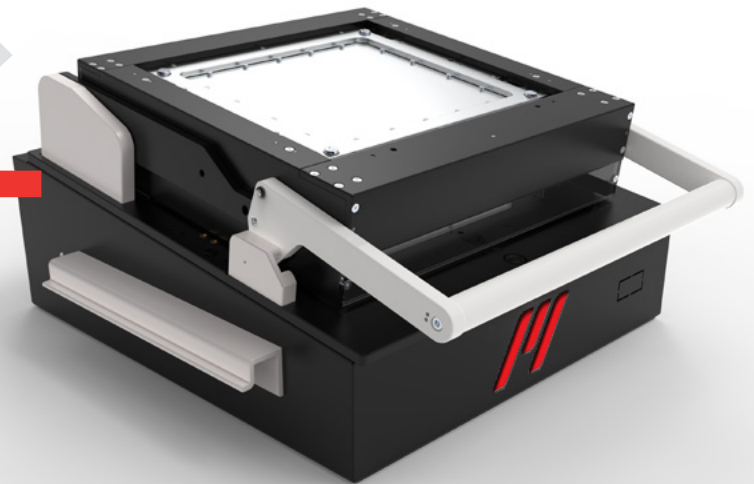
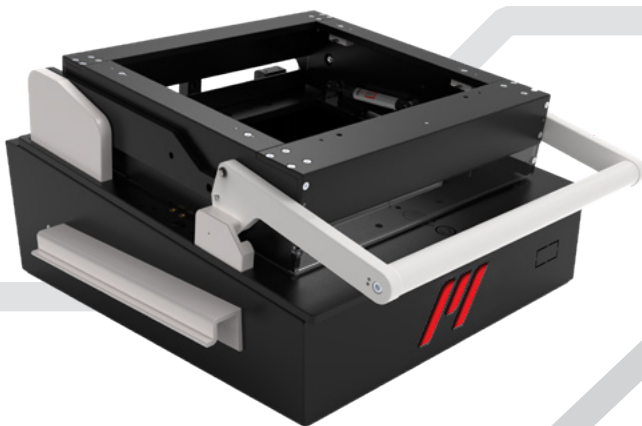
Designed for RF boards to measure RF Signals

- Perfect Protection against External Signal Interferences
- High isolation up to 99.7 dB
- Qualified from 400 MHz to 6 GHz to cover all common RF bands
- Solid and reliable construction from solid aluminium block
- Fully removable bottom plate allows easy and effective wiring
- Reliable overlapping seams on all permanent interconnections
- Rounded side corners for better RF reflection characteristics
- Expandable chamber to extend RF environment
- Large cabling access plate, removable and easy to customise
- With or without Absorber

RF Exchangeable Unit
Nd-RF-EXCH-D3



Empty **Nd-MFS-D3-RF** Fixture Kit



Nd-MFS-D3-RF Fixture Kit
implemented with **RF Exchangeable Unit**

